



# GMT MONTHLY MEMBERSHIP PROGRESS REPORT

Results as of: 4/30/2019

Multiple District 14

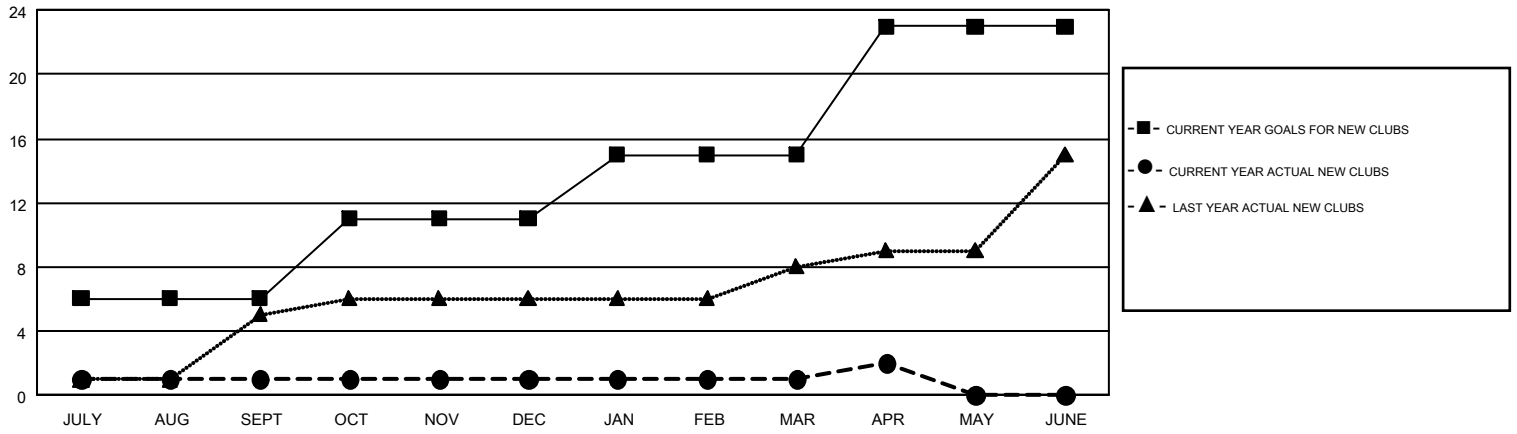
LOCATION: PENNSYLVANIA

GMT: CINDY GREGG

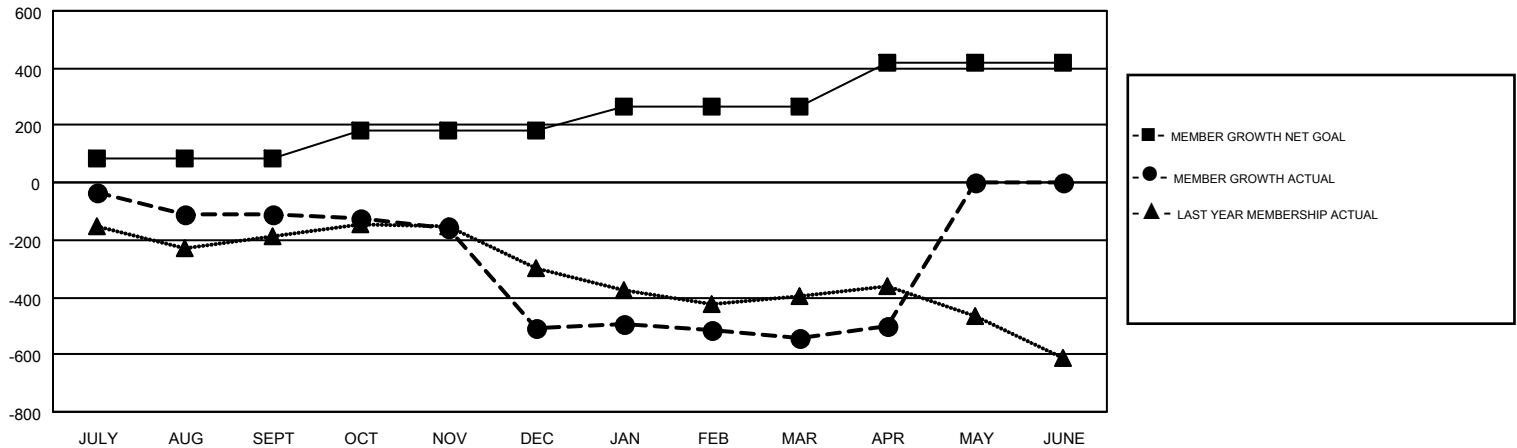
GMT CA 1

Clubs				Members			
RESULTS FOR 2018-2019				RESULTS FOR 2018-2019			
QUARTER	NEW CLUB GOAL	NEW CLUBS	DROPPED CLUBS	QUARTER	MEMBER GROWTH NET GOAL	MEMBER GROWTH ACTUAL	DROPPED MEMBERS ACTUAL <small>(including transfers)</small>
JULY/AUG/SEPT	6	1	8	JULY/AUG/SEPT	84	285	360
OCT/NOV/DEC	5	0	6	OCT/NOV/DEC	100	343	706
JAN/FEB/MAR	4	0	6	JAN/FEB/MAR	82	370	353
APR/MAY/JUNE	8	1	0	APR/MAY/JUNE	151	199	140

GOALS AND ACTUAL NEW CLUBS CUMULATIVE



GOALS AND ACTUAL MEMBERS CUMULATIVE



DROPPED CLUBS: 20	365 CLUBS OF 699 ADDED 1 OR MORE NEW MEMBERS	<b>GENDER DISTRIBUTION</b> MALE 13,488 (73.29%) FEMALE 4,915 (26.71%)
<b>DROPPED MEMBERS</b> DECEASED 274 CLUB CANCELLED 143 OTHER 1,142 <b>TOTAL 1,559</b>	<a href="#">CLICK HERE FOR CUMULATIVE MEMBERSHIP DATA</a>	TOTAL FAMILY UNIT MEMBERS 3,464  FAMILY MEMBERS PAYING HALF DUES 1,787